

# Dunchurch Infant School and Nursery



01788 810292



office@dunchurchinfants.co.uk



**Spring Term  
Issue 1**

**12 January 2018**

## Headteacher's Message

I hope you and your families enjoyed the Christmas holidays. It has been lovely to hear all about the festive season from the children. Reception, in particular, have been enjoying sharing their experiences during 'show and tell'.

Our new Rainbow Room welcomed children for the first time this week. Mrs Herbert and the rest of the nursery team have worked very hard to get the new room ready and it's been great to see children using all of the new resources. Our youngest children (those who turn three during the course of this school year) now have a space of their own. This means we can pitch the environment more accurately to their needs than when they were in with pre-school children. It also gives us more capacity at a time when there is a lot of demand for nursery places. We are holding an Open Morning between 9.30-11.30am on Saturday 27 January for those who would like to see our new room.



**Ian Dewes**

[head@dunchurchinfants.co.uk](mailto:head@dunchurchinfants.co.uk)

## Extra-curricular Activities 15 – 19 January 2018

<b>Monday 15th</b>	12.00 – 1.00pm Singing Club 3.15 – 4.00pm Martial Arts 3.15 – 4.00pm Spanish Club
<b>Tuesday 16th</b>	3.15 – 4.45pm FDS Ball Skills
<b>Wednesday 17th</b>	3.15 – 4.15pm Yr 2 Sports Club
<b>Thursday 18th</b>	3.15 – 4.45pm FDS Ball Skills
<b>Friday 19th</b>	12.00 – 12.30pm Yr 1 French Club 12.30 – 1.00pm Yr 2 French Club 1.30 – 3.00pm Violin/Cello Lessons 3.15 – 4.15pm Yr 1 Sports Club

## CALENDAR


## Reminders for 15 – 19 January 2018

<b>Monday 15th</b>	<b>5pm National Deadline for all Reception and Year 3 school applications to LEA</b>
<b>Tuesday 16th</b>	
<b>Wednesday 17th</b>	
<b>Thursday 18th</b>	
<b>Friday 19th</b>	

# WEEKLY PUPIL AWARDS

## Attendance Award

FOR THE WEEK ENDING 22 DECEMBER 2017

	Attendance %	No. of Late Arrivals	Overall Score	Cup awarded to
Little Owls	95.6	3	92.6	
Elf Owls	98.5	0	98.5	
Barn Owls	96.7	1	95.7	
Snowy Owls	93.7	2	91.7	
Spectacled Owls	98.3	1	97.3	
Tawny Owls	95.3	0	95.3	



## WEEKLY GREEN AWARD

Awarded to Tawny Owls

Well done to the children from Mrs Rawes and Mrs Horne's class for keeping their classroom and working environment tidy throughout the whole week!

*Awarded by our Caretaker, Mr Haggan, and his Assistant, Mrs Turtle*

## LUNCHTIME GOOD BEHAVIOUR AWARDS

Awarded by Mrs Burdett and her lunchtime staff

Blue Room	Amberley Thaper
Red Room	William Nash
Rainbow Room	Lily Dewes
Little Owls	Iris Ganley
Elf Owls	Fayth Ptaszynski
Barn Owls	Lara Horton
Snowy Owls	Ava Truslove
Spectacled Owls	Elizabeth Warburton
Tawny Owls	Emma Artiss

# YEAR GROUP INFORMATION

<p><b>BLUE ROOM &amp; RED ROOM</b></p>	<p><b>NURSERY</b></p> <p>This week we have loved telling each other how we celebrated Christmas and using our memory to describe what presents we received. We have been looking at groups of items, comparing the amounts, as well as exploring 'why' questions. Next week's Show &amp; Tell: Something that is a square shape.</p>	
<p><b>RAINBOW ROOM</b></p>	<p>The children have settled in fantastically and have loved exploring all the new resources! We have had our first music session, joining in with actions and singing familiar songs. We have also enjoyed getting very muddy outside in the mud kitchen.</p>	
<p><b>LITTLE OWLS</b></p> 	<p><b>RECEPTION</b></p> <p>We are delighted with the way the children came back to school after the Christmas break. It was lovely to see so many happy faces on Monday morning. Long may it continue! It has been very interesting to learn about your family celebrations over the holiday. The children have shared photographs, mementos, writing and memories with their class. They have also had the opportunity to re-enact their Christmas celebration in the role play area. We made a 'human number line' to help to learn about 1 more and in phonics we have looked at 'oi' and 'ear', 'th' and 'ng'.</p>	<p><b>ELF OWLS</b></p> 
<p><b>BARN OWLS</b></p> 	<p><b>YEAR ONE</b></p> <p>This week: In English we have learnt about adjectives. In Maths we have been practising counting in 2s, 5s and 10s. In topic we have had special visitors to start to learn about the 1960's. In phonics we have recapped the split digraphs.</p>	<p><b>SNOWY OWLS</b></p> 
<p><b>SPECTACLED OWLS</b></p> 	<p><b>YEAR TWO</b></p> <p>This week: In English we have retold and unpicked the story of 'Cinderella'. In Maths we have learnt about one step and two step problems involving addition and subtraction. In SPaG we have been learning about the use of commas and expanded noun phrases. In Topic we located Mexico and looked at their culture</p>	<p><b>TAWNY OWLS</b></p> 

# NEWS, REQUESTS & REMINDERS

## CONGRATULATIONS!

Congratulations this week  
go to .....

**Aurelia Salisbury** for taking part in  
Christine Anderson Theatre School's  
CATS Kidz event

**Emma Artiss** for achieving her Swim  
England Stage 2 swimming award

**Well Done Girls!**



## E-SAFETY

Our safety theme this half term is  
'passwords'.

You could talk to your child about devices  
that need passwords and why we need  
these.

What would happen if we didn't have  
passwords?

## PTA MEETING

The next PTA Meeting is due to take place  
on **Wednesday 24 January** at 7.30pm at  
the Dunchurch Social Club.

Everyone is welcome to come  
along – we look forward to seeing you  
there!

## Find

**'Dunchurch Infant & Nursery  
School PTA' on Facebook or e-mail**  
[dunchurchinfantpta@gmail.com](mailto:dunchurchinfantpta@gmail.com)  
**if you would like to find out more**

\*\*\*\*\*

**Minutes of all PTA Meetings are  
now available on the school  
website**  
[www.dunchurchinfants.co.uk](http://www.dunchurchinfants.co.uk)  
**under 'Parent Zone'**

## TERM DATES 2018

### Spring Term 2018

Half Term

Monday 19 – 23 February

Term Ends

Thursday 29 March

### Summer Term 2018

Term Starts

Monday 16 April

*Bank Holiday*

*Monday 7 May*

Half Term

Monday 28 May – 1 June

*Teacher Training Day*

*Friday 22 June*

Term Ends

Friday 20 July

### Autumn Term 2018

*Teacher Training Day*

*Monday 3 September*

Term Starts

Tuesday 4 September

Half Term

Monday 29 October – Friday 2 November

*Teacher Training Day*

*Friday 23 November*

Term Ends

Friday 21 December

***FAMILY HOLIDAYS MUST BE BOOKED  
DURING THE SCHOOL HOLIDAY  
PERIOD ONLY***





## WOODY'S BLOG

Happy New Year everyone and welcome back to school. I hope you all had a lovely Christmas; I know I did! During the festive break, I met up with my brother, Winston, as you can see in the photograph opposite. We look so alike, don't we; I bet you can't guess which one is me? Winston is a little bit bigger than me and he lives on a canal narrow boat. Isn't he lucky having a home that floats!

I am really looking forward to having great fun with you this term and meeting more of you at Woody's Buddies Club.

Woof, woof from:

**Woody xx**

**DUNCHURCH  
PANTOMANIACS  
PRESENT**

**RUM BAA BAA  
AND THE FOUR  
TEA THIEVES**

*Book Now*

*Written by  
Sue Protheroe*

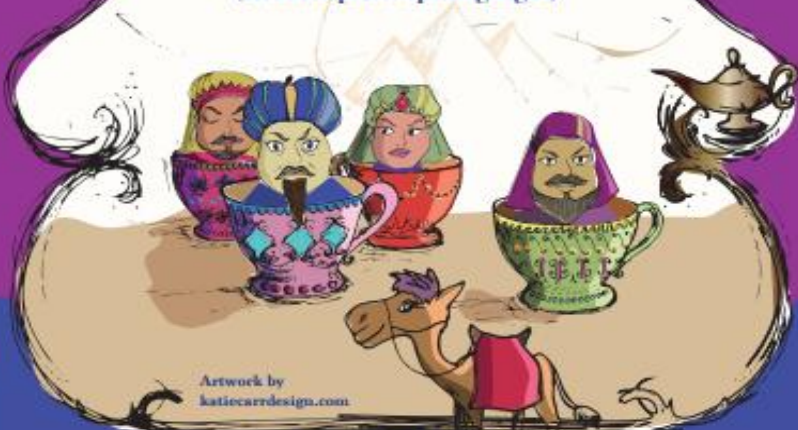
*at Dunchurch Village Hall*

**Jan 19th, 20th, 21st, 24th, 26th, 27th**

**Gala Night 25th (£15)**

**Matinees 20th, 21st**

**Tickets £7, £6 Sur, £4 children**  
(Reduced prices opening night)



Artwork by  
katiecarrdesign.com

**TICKETS FROM :**

**WILD & FREE, BANK STREET, RUGBY O1788 570400  
OR WANDAS, DUNCHURCH O1788 522021**

**Happy  
New Year!**

## WHOLE SCHOOL PE TIMETABLE

Please note the new days for  
year group PE sessions:

**Reception:** Monday pm

**Year 1:** Thursday pm

**Year 1:** Friday pm

**Year 2:** Tuesday pm

**Year 2:** Wednesday pm

***PE kits should be kept in  
school at all times, please.***

# **Donations for Dunchurch Infant Second Hand Uniform Shop gratefully received**

Please leave any unwanted or outgrown  
items at the School Office.



Many thanks  
Dunchurch Infant PTA



For further details contact Leanne on 07977 656951

## **RECEPTION PARENTS**

Last term, you were given a letter from Compass, the School Health and Wellbeing Service, with regards to your child taking part in a Height and Weight Check. It explained that every year in England, children in Reception and Year 6 have their height and weight measured as part of the National Child Measurement Programme (NCMP) and if you did not wish your child to take part, there was an opting out process.

This is a reminder for you that the check will be taking place on the afternoon of Tuesday 23 January.